



**ROUND EXPRESS.CO.,LTD.**  
**Company Profile**

# INDEX

- **Company Profile**
- **Organization Chart**
- **Business Contents**
  1. **Air Cargo Services**
  2. **Sea Freight Services**
  3. **e-commerce Services**
  4. **3PL Services**



# Company Profile

**ROUND EXPRESS** was found in 2020 as **in the middle of COVID-19**, so we are struggling to connect the world harmoniously against the fear of sudden changes and challenges. We were established as a logistics company that provides the best logistics services and **customer satisfaction as our first priority**. We are based on our **strength of organization composed of experts with abundant experience**. We handle air cargo/sea cargo from/to the world, **mainly from/to Japan, faster and more safely**.

- Company name: Round Express Co., Ltd.
  - Establishment: July, 09, 2020
  - Capital: JPY4 million
  - Representative Director: Ken Kim
- Tokyo Headquarters: SEVEN BLDG. 4F, 2-21-10, NIHONBASHI-NINGYOCHO,  
CHUO-KU, TOKYO JAPAN, 103-0013
- Representative number: TEL: 81-3-5604-5663, FAX: 81-3-5604-5664
  - Business: Air Cargo, Sea Freight, Customs Clearance,  
Warehousing, Packaging, Local transportation, Logistics Consulting, etc.

# Business content

## 1. Air Cargo Service

- **Export/Import Transportation**
- **Consolidated Transportation**
- **Special Transportation**  
(Precision Machinery /  
Dangerous Goods / Cold Cargo)
- **Door to Door Service**
- **Chartering Service**

We are committed to safe and reliable transportation by our original high-quality service and securing stable space since international air freight transportation requires speed and accuracy. So, we control various transportation modes with any luggage to provide the best transportation service for our customers.



# Business content



## 2. Sea Freight Service

- Export/Import Transportation
- LCL /FCL
- Bulk Shipment
- Door to Door
- Vessel Chartering Service

Utilizing our worldwide network, we offer FCL / LCL cargo, various transportation services, and provide integrated land and sea services including customs clearance, storage, collecting, and delivery.

# Business content

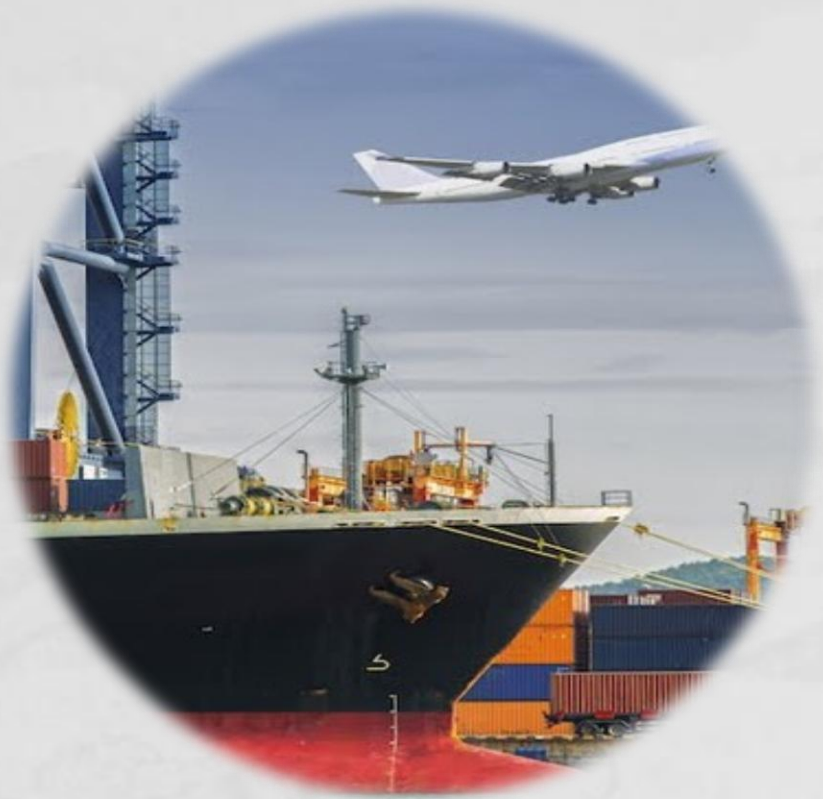
## 3. e-Commerce Service

- B2B、B2C Business
- Export/Import Transportation
- Handling Manifest Customs Procedures
- Managing Warehouse/Delivery
- Personal Shopping (Courier ) Services

An era in which cargo purchased from overseas arrives within a week according to the needs of individual shippers, we provide a service that takes care of import / export operations with prompt response and safely delivers to your door.



# Business content

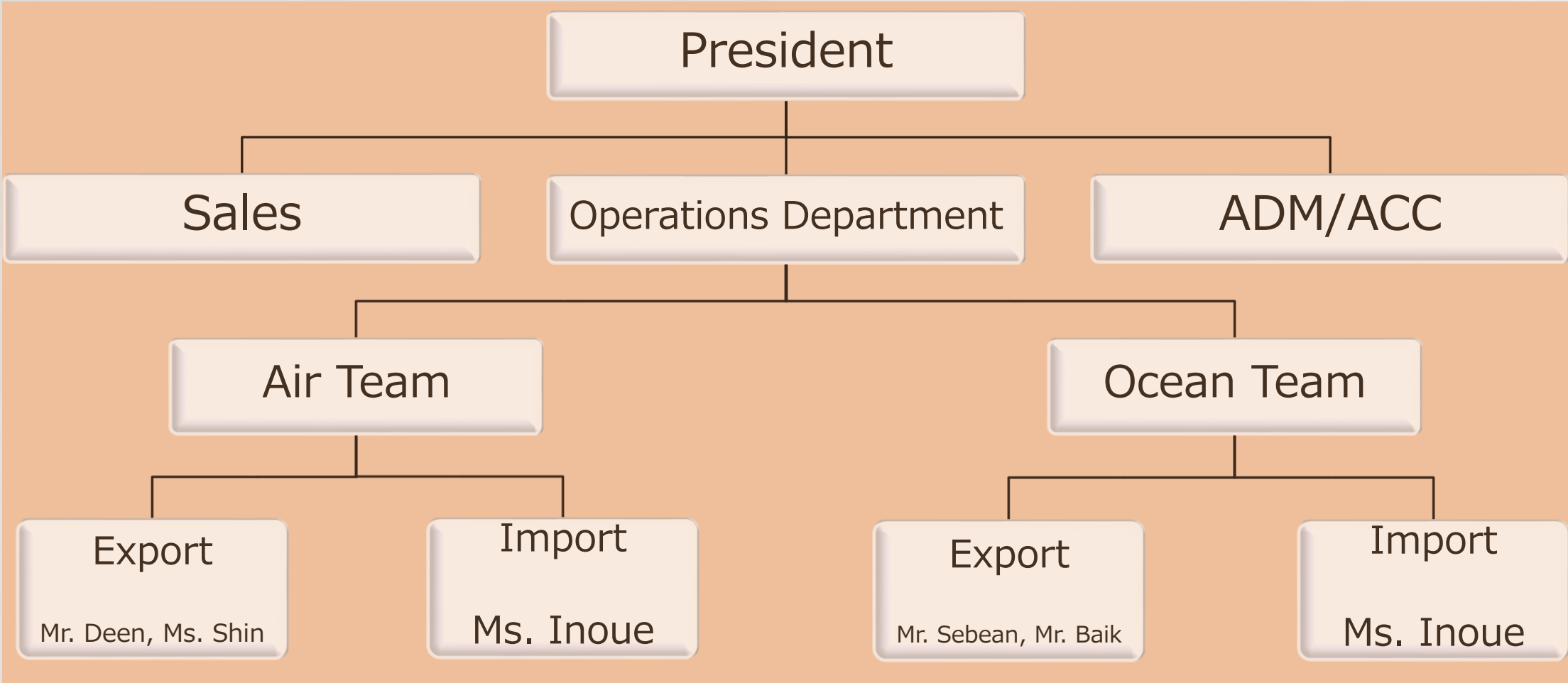


## 4. 3PL Services

- Trade Forwarding Service
- Preparation of Import / Export Declaration
- Handling Bonded Warehouse
- Handling Procedures for Customs Filing, Tax Filing, Various Inspections, etc.
- Handling Procedures such as Evaluation Declaration, Customs Duty Refund, etc.
- Handling Cargo in Airport

An era in which globalized businesses are advancing and it is essential for goods to cross national borders. However, customs clearance is required when goods cross national borders, and customs clearance requires complicated procedures such as customs clearance-related laws and regulations, and customs-related documents as well. We carry out such business procedures for import / export customs clearance for our clients.

# Company Organization



TEL : 81-3-5604-5663, FAX : 81-3-5604-5664

GROUP E-MAIL: [round@round-exp.co.jp](mailto:round@round-exp.co.jp)





# THANK YOU

ROUND EXPRESS CO., LTD.

SEVEN BLDG 4F, 2-21-10,

NIHONBASHI-NINGYOCHO, CHUO-KU, TOKYO

103-0013 JAPAN

TEL : 81-3-5604-5663

FAX : 81-3-5604-5664

E-MAIL: [round@round-exp.co.jp](mailto:round@round-exp.co.jp)